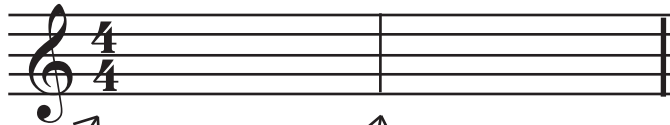
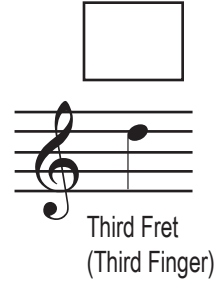
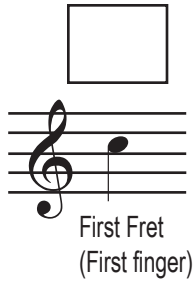
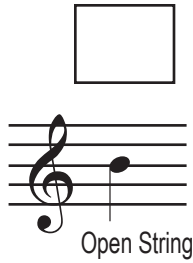


Lesson 2

Common Notation

B string

Notes on the Second String



Time signature
(see homework)

Bar line
between each measure

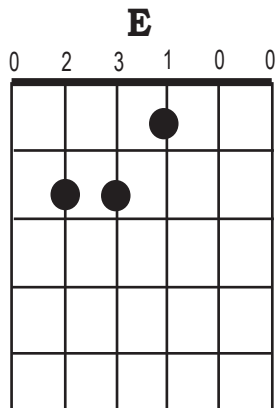
Heavy double bar
at end of piece

Tablature Notation



Tablature notation also normally uses bar lines, but normally does not have a time signature.

Chord Diagram



"E major" chord:

If there is nothing following the capital letter of the chord name it is a "major" chord.