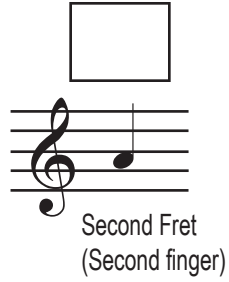
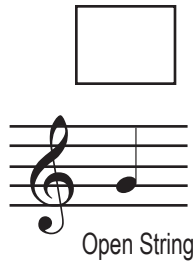


Lesson 3

Common Notation

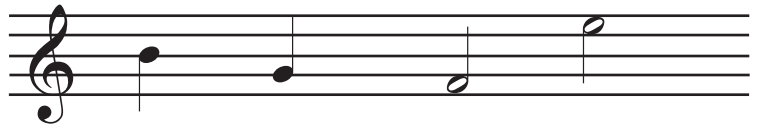
G string

Notes on the Second String



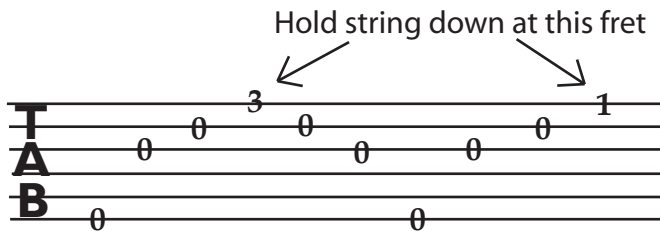
Half notes have:
an open head
a stem pointing up or down

Half notes are always
twice as long as quarter notes.
(See homework.)



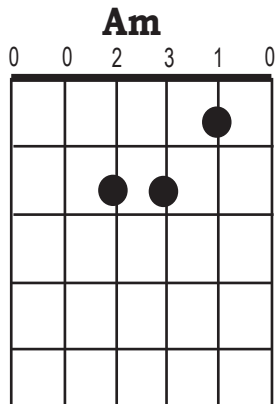
Stems point up
if notes are below the middle line.

Tablature Notation



A number on a tablature line means
hold the string down at that fret while you pluck it.

Chord Diagram



Downstroke



Upstroke