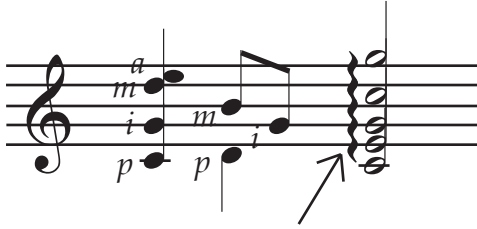


# Lesson 8

## Common Notation



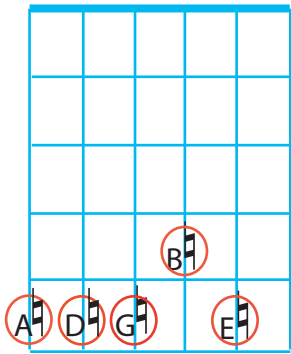
This symbol means "strum the chord".

Notes lined up vertically or sharing a stem are played at the same time.

## Tablature

	0
<b>T</b>	1
<b>A</b>	0
<b>B</b>	3

## Guitar Tuning



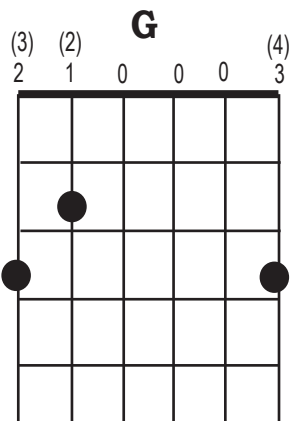
Remember that you can find the open string notes at a fret on a lower string? You can use this to tune your guitar. Tune the lowest string to E. Then tune each string to the string below it at the fifth (or fourth) fret.

## Theory Homework

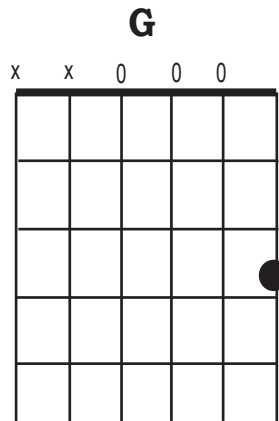
Read about [Half Steps and Whole steps](http://cnx.rice.edu/content/m10866/latest/) at <http://cnx.rice.edu/content/m10866/latest/>

1. Do problems one and two in "Half Steps and Whole Steps".
  2. Explain why the tuning for the B string is at a different fret than all the other strings:
- 
3. Start trying to tune your guitar when it sounds out of tune to you.

## Chord Diagrams



Regular



Simplified

There are many different ways to play every chord. Which G chord is right for you right now?