

Lesson 9

Common Notation

A dot right after a note means to add another half of the length of the note:

Dotted half = half + quarter



Dotted quarter = quarter + eighth

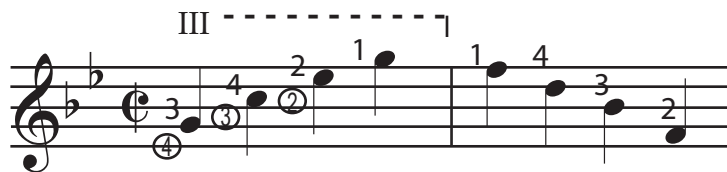


Guitar Notation

Roman Numerals

on a guitar part tell you which fret your left hand first finger should be playing. This is your **position**.

A dotted line may be there to tell you how long to stay in that position.



Circled Numbers

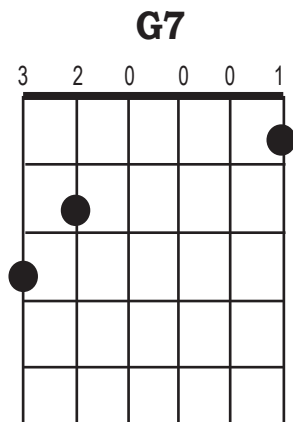
tell you what string to play a note on, if it's a different string than usual.

Theory Homework

Read about [Key Signature](http://cnx.rice.edu/content/m10881/latest/) at <http://cnx.rice.edu/content/m10881/latest/>

1. Do problem one in "Key Signature".
2. Circle the key signatures on your practice page.
3. Fill in the correct bass notes to play on the chord line of your practice page

Chord Accompaniments



When playing a bass note-strum accompaniment:

The first bass note you should pick is the one that names the chord.

