

ROADMAP TUTORIAL (% [U+8AAA] - CHINESE)*

Wei-Cheng Wong

This work is produced by OpenStax-CNX and licensed under the Creative Commons Attribution License 2.0†

Abstract

ConnexionsΓ~ A [U+5167] MΘ

1 ConnexionsΓ

RoadmapΓh [U+60A8] @ConnexionsAz1A~XΣΘ^7ConnexionsΣ(Connexions toolbar)z1B(Courseview)Θ [U+60A8] aXΓ,lz1Θ [U+93]

NOTE: ΠAffalMozillaNetscape 7.xA@HXΘ

2 ConnexionsΣ

[U+60A8] [U+555F] MozillaNetscape, [U+60A8] wa~—Figure 1ΩConnexions toolbarΣ



Figure 1: ConnexionsΣ

ΘE,ConnexionsΣ^7:ConnexionsA(^Connexionsj4), [U+60A8] v1B~Ae, ^YA,5(search)z1, ^Γ [U+8AAA] (help),1L(Dictionary), ^fiΣ^, [U+60A8] a:@HΣAView menu,1Show/Hide(^/fl),#ConnexionsΣ (Figure 2)1Θ,ffwl [U+60A8] AShow/Hide(^/fl)Π [U+93] Roadmap^1 ,Æ [U+7E6B] [U+60A8] AB”Θ

*Version 1.1: Feb 22, 2006 12:37 am -0600
†http://creativecommons.org/licenses/by/2.0/
‡http://cnx.rice.edu/roadmap

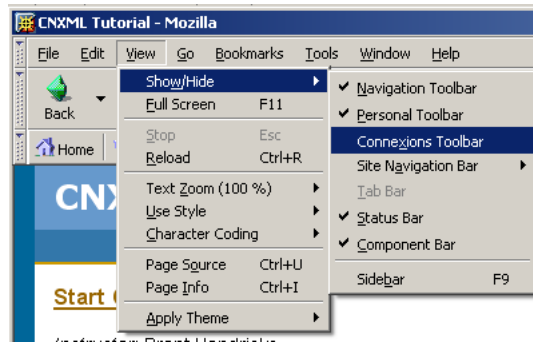


Figure 2: [U+555F] ConnexionsΣ

2.1 [U+555F]Γ

^Σ, [U+60A8] aU [U+64CA] ΣTYAShow/Hide (^/fl), lz1^tAE# ^ Courseviewz1B (Section 3.1: qjud)btΘ [U+60A8] iz1, Wiw1E#Bt, l

NOTE: , [U+60A8] vlXMozilla, MozillaA#Y a1w1ΓE#Θ [U+60A8] aF9iWffu, [U+60A8] 4jAt^Ω/Θ [U+60A8] al“SF9SiW^wuΘ

2.2 Y

iz1, [U+60A8] a:XΣz1ejAPreviousNextY, @qz1Θ:/6 [U+60A8] @HAFoward4BackY4Θ(Previous)Y(Next)A.Æg [U+6D89] [U+60A8]

2.3 3;Σ

- U [U+64CA] ΣE#AConnexions, ^ Connexionsj4² Θ
- Search5^5Search the Connexions repository6(5Connexions)4, [U+60A8] a54A, "X(IA5 [U+64CE]) ΔeΔA(ID)Δ-ÆeΔÆeΔ
- Help [U+8AAA] ^ .Θ
- DictionaryL^L4, aX [U+67E5] Y [U+60A8] l:z1flAΘ

3 Γz1B

Figure 3, ΓA0^ ΛβhCourseviewz1BΘz1BΓAE#, ^ [U+60A8] vl@Az1BAΘXz1B, B-, [U+60A8] ?jΘ, [U+60A8] iz1, z1Bji^5z16A~y, z

²<http://cnx.rice.edu>



Figure 3: Connexions

3.1 qjud

, ^qz1BjuAd,bz1B/A [U+9EC3]ΩΛβ, [U+62D6] qjudΘ, [U+60A8] U [U+64CA] [U+9EC3] ΩY,Æ [U+60A8] [U+62D6] Υ6juATd,jui1ΘU

3.2 iz1

-Figure 4(a),U [U+64CA] z1BjujΩCoursez1^ΘΘΠ [U+9304] Open([U+555F]),iz1Θ

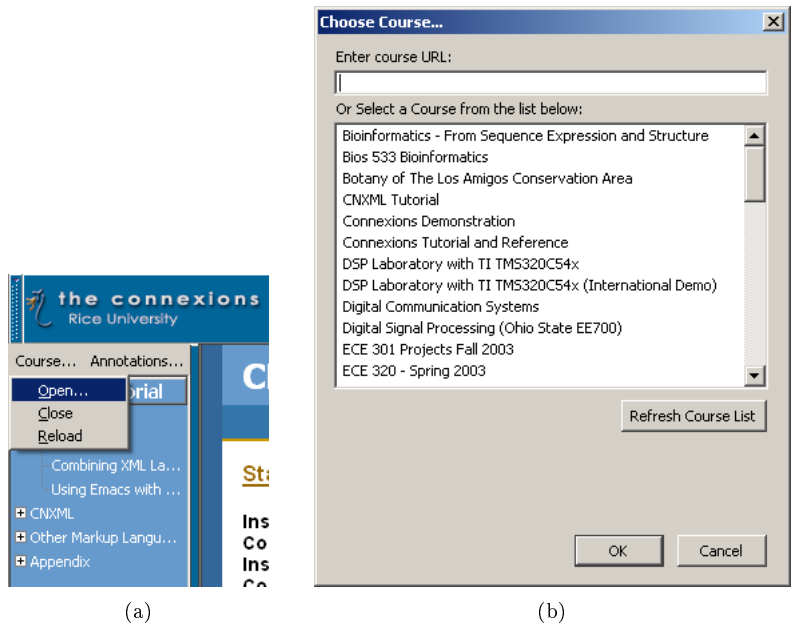


Figure 4: [U+555F]z1

Figure 4(b);h,z1AkΣt,Θz1z1,0KΘii [U+60A8]DAz1,lz1B^Θ-Figure 5Θ

NOTE: 4?XURLiz1,6l4XURL,~Tiz1,[U+60A8]?XChoose Course(kΣt),l5Enter course URL6AzURL,U [U+64CA]0K

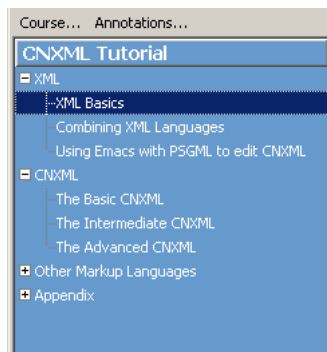


Figure 5: z1B

3.3 Xz1B@

, [U+60A8] ^lz1@, Yz1AeeΘ, z1AeffIIIh, h(leEY4+A), U [U+64CA] U [U+64CA] %e, O%, Y%AeeΘ: iit: Θ^ Ae, lz1B^wuΘ [U+60A8] O%
 Θ
 [U+60A8] aU [U+64CA] 3; eB-3; ,Æ [U+60A8] a: XΣA PreviousNextY (Section 2.2: Y)-Az1A [U+95B1] Θ
 [U+60A8] IIIiAz1^ [U+53E6], z1BAæAAe^Θ” [U+60A8] “iæA,)URL, U [U+64CA] ΣA PreviousNextYIU [U+64CA] ^ [U+60A8]”

4 ~

lz1A%, ~ (Annotation)aXd [U+9304] ΨABUΘ: @iwl%Θ [U+60A8] U [U+64CA] wl%A, iDkΣjΘAdÆ (authors) Δz1Æ (instructors) Sy
 Λ~AMdΘAdÆz1Æ)z1A~, a“0B-: @% [U+5167] MΘSy)0A~, \$off0AΔ5XÆXA, a:)A0B-, Iœ@HAΘ

NOTE: [U+60A8] ?YiConnexionsFX~A1Θ

4.1 B-~

U [U+64CA] B-~, i4kΣjD^~Θz1~wl5Course Annotation6(z1~)AkΣjθ0A~wl5Annotation Body6(~)AkΣjθ%A9~A4œΘ, [U+60A8]

1. U [U+64CA] z1BjAAnnotations~^, wfflAII [U+9304]: Add [U+589E] ‘Show/Hide^/flΘ
2. U [U+64CA] Show/Hide(^/fl), wfflAII [U+9304] (Figure 6): Course Annotationsz1~Personal Annotations0~Θ, 4Adwl3fflAEY, fflial%B-Θ

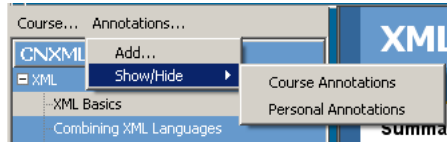


Figure 6: ~5^/fl6II [U+9304]

3. U [U+64CA] ~ffl [U+589E] ‘dΘ

4.2 Entering a Personal Annotation

, [U+60A8] D^lz1A%)0~, Y [U+6B65]:

1. ^ [U+60A8] D^ [U+589E] ‘~A%Θ
2. l^%U [U+64CA], iwII [U+9304] jΘ
3. ΘII [U+9304] Annotate Current Selection with RoadmapXΓ~II1A%ΘiDAnnotation body dialog box~økΣj (Figure 7)Θ

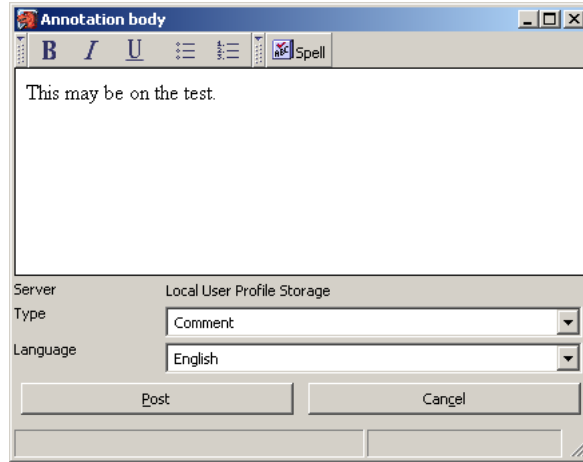


Figure 7: Annotation body dialog box

4. $\text{lk}\Sigma t [U+60A8] \sim \sim A\% \Theta$
5. $U [U+64CA] \text{Type} \phi AY, \Theta Y \Pi [U+9304] \sim 4 \Theta \text{Type} 4^{\wedge} : \text{Comment} \Delta - \Delta \text{See Also} [U+67E5] [U+95B1] \Delta \text{Question} \text{flg} \Delta \text{Explanation}$
6. $U [U+64CA] \text{Language} () \phi AY, \Theta Y \Pi [U+9304] \sim A \Theta$
7. $U [U+64CA] \text{Post} T d [U+9304] . \sim , [U+60A8]) \sim A j \% 4 w \Theta$

4.3 0~

, ^~, B~YDelete $\Theta [U+60A8] \wedge w51A \sim , -w5 \text{Annotation Body} 6 \sim \phi k \Sigma j \Theta \text{Connexions} \Theta \% . \sim \sim \Theta$