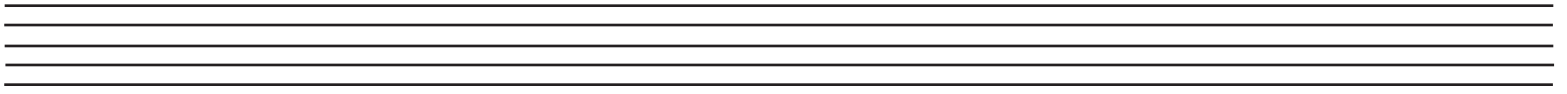
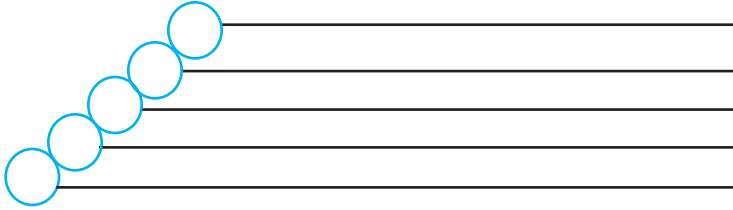


Clef Practice

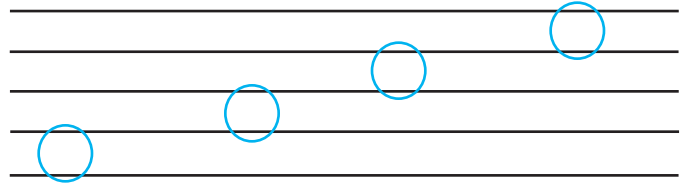
Practice writing your clef symbol on this staff. Write at least eight clef symbols



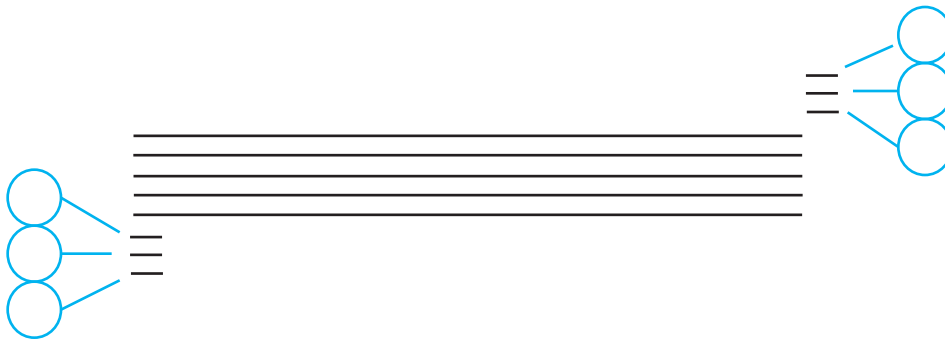
Write the letter names of the lines in your staff:



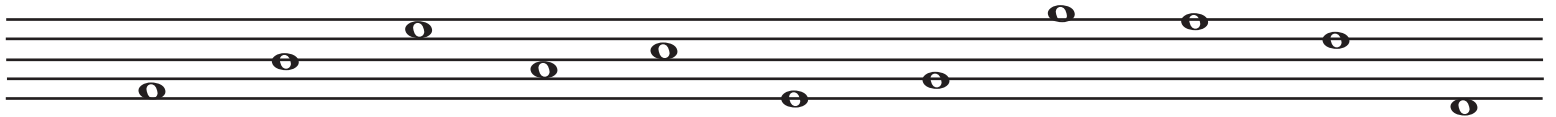
Write the letter names of the spaces:



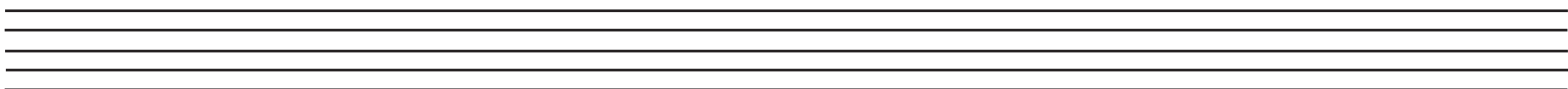
Write the letter names of the three ledger lines below and the three ledger lines above your staff.



Write your clef symbol at the beginning of this line. Then write the correct letter name above each note.



Write your clef symbol at the beginning of this line. Then write a note in the staff for each letter below the staff.



C G F D E A B